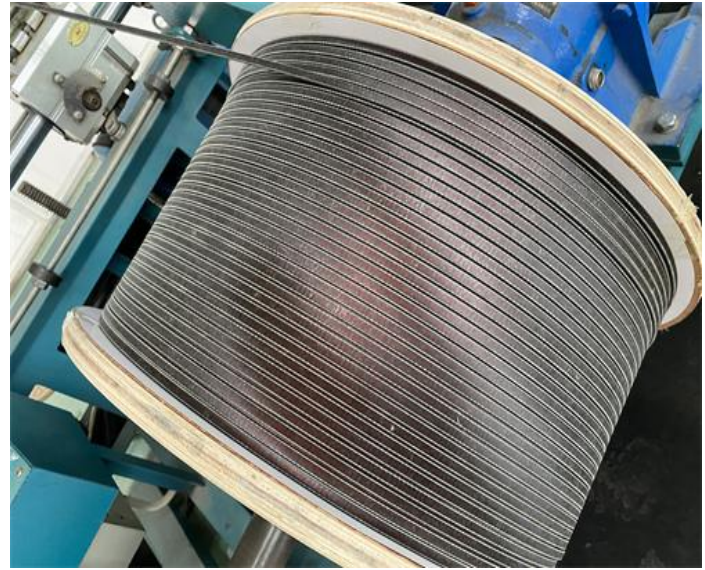
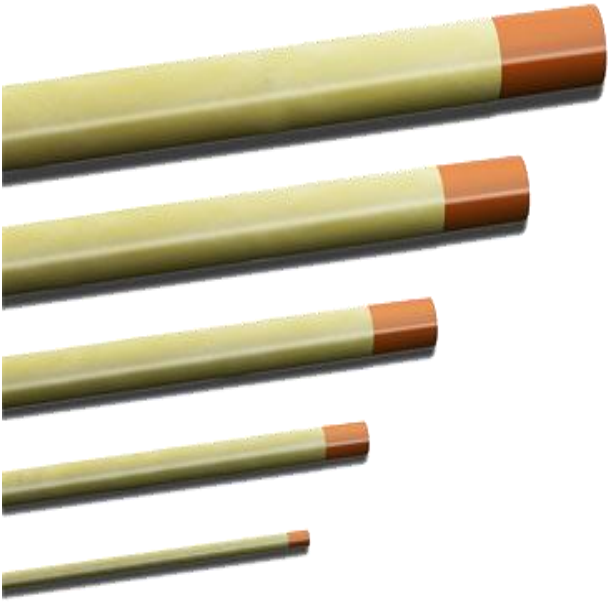




INSULATION FIBER GLASS  
WINDING WIRE

---

Insulation Fiber Glass Winding Wire is made by wrapping a copper/aluminum wire with a layer of fiberglass insulation, which provides both electrical insulation and mechanical strength.



LP Industry has experienced team for Enameled Wires, advanced technology, excellent equipment, strict management is the foundation of the company continuous development and expansion, and the Enameled Wires win the trust of customers. We believe that through our continuous efforts and pursuit, we will be able to achieve mutual benefit and win-win with our customers!



## Insulation Fiber Glass Winding Wire

Conductor	Copper & Aluminum Wire
Dimension	Round: Diameter: 1.0 ~ 7.0 mm; Rectangular: Thickness(a) : 1.0 ~ 10.0 mm; width(b): 3.0 ~ 35.0mm
Insulation Thickness	Single, double, or according to your requirement
Insulation Material Type	Fiber Glass, Fiber-glass+ Varnish, Fiber-glass+ Film,etc
Certificate	UL
Standard	IEC, NEMA, GB, JIS
Packing	30kg- 150kg ply-wood spool(250*400/250*500/250*600)
Application	Oil-immersed transformer windings, medium and large electric motor and power substations, etc.



## INSULATION CLASSIFICATIONS ACCORDING TO IEC

Class	Temperature	
	° C	° F
E	120	248
B	130	266
F	155	311
H	180	356
C	200	392
C+	220	428
HC	240	464



# Packing

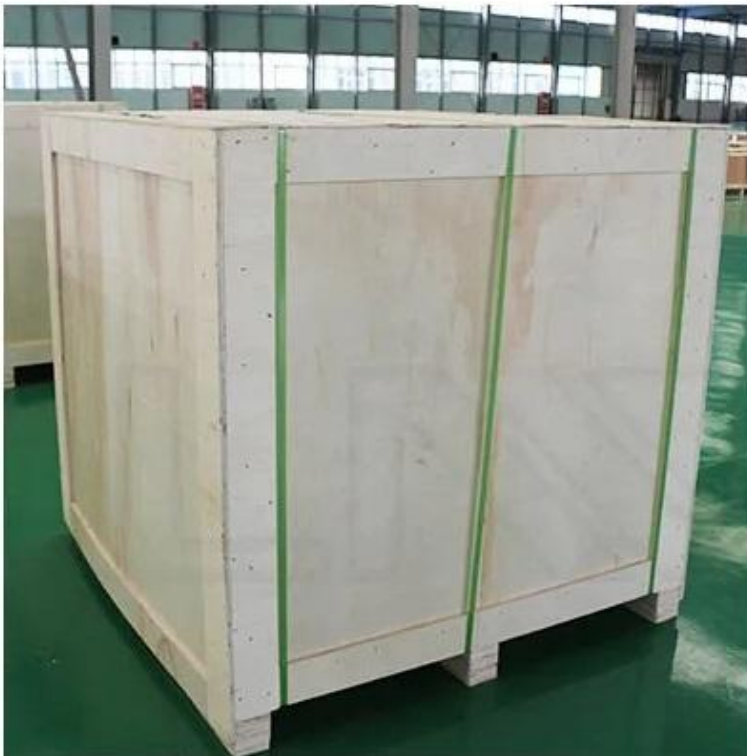


## Innerpacking:

PT-25/PT-30/PT-60/PT-90/PT-200  
plastic spool or  
250mm\*400mm/250mm\*500mm/250mm\*600mm wooden spool

## Outer packing:

wooden case outer Winding wire



## LP Insulation Fiber Glass Winding Wire Feature:

**High-temperature resistance:** Insulation fiberglass winding wire is capable of withstanding high temperatures, making it suitable for use in high-heat applications.

**Electrical insulation:** The fiberglass insulation provides excellent electrical insulation properties, making it ideal for use in electrical applications.

**Chemical resistance:** The fiberglass insulation is resistant to many chemicals, which helps to protect the wire from corrosion and other forms of damage.

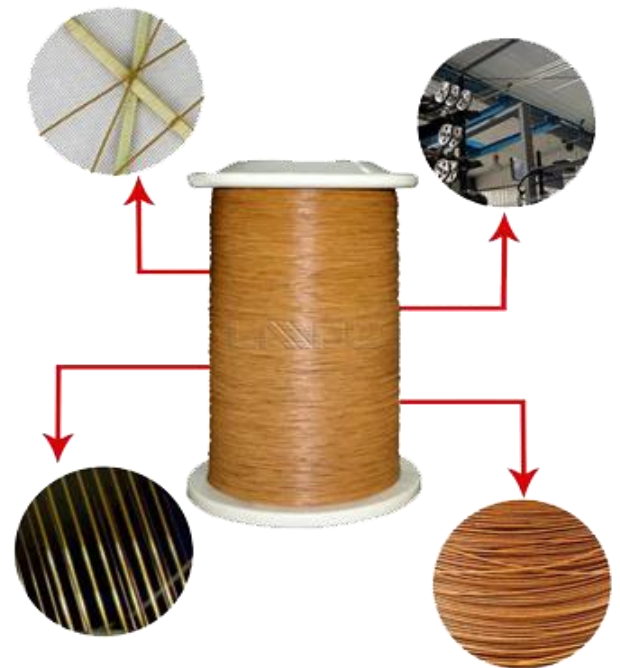
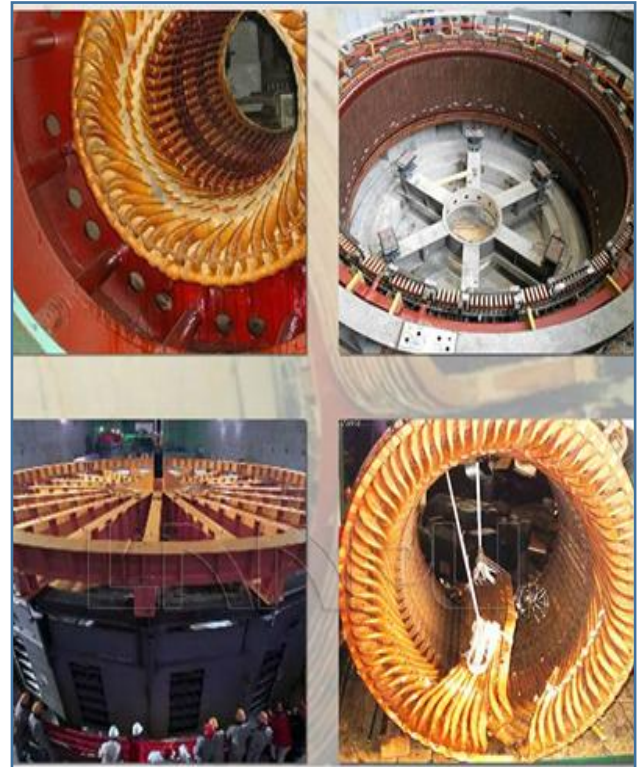
**High mechanical strength:** The fiberglass reinforcement provides the wire with high mechanical strength, making it more resistant to breakage and other forms of damage.

**Lightweight:** Fiberglass is a lightweight material, which makes the wire easy to handle and install.

**Non-magnetic:** Fiberglass is a non-magnetic material, which makes the wire suitable for use in applications where magnetic interference must be minimized.

**Low dielectric constant:** The fiberglass insulation has a low dielectric constant, which means that it does not store a significant amount of electrical charge and does not produce significant capacitive coupling.

**Resistant to moisture:** The fiberglass insulation is resistant to moisture, which helps to prevent electrical leakage and other forms of damage.



**Zhengzhou LP Industry**

**CO.,LTD**

**Email:lpales@cnlp.cc**

**Tel: 0086-371-65861281**

**Whatsapp/Mobile:0086-18103865695**

**Website:www.lp-industry.com**

**Address:#4 building One Belt One  
Road**

**Industry,**

**Jinshui District, Zhengzhou, China**

Welcome to enquiry LP Industry Insulation  
Fiberglass Winding Wire

